


BCA
0118




FARMHUB


An Agro Welfare System

 farm handbook

 solutions

 online buying

 online selling

 online payment



FARMHUB – An Agro Welfare System



**A PROJECT REPORT SUBMITTED TO GOA UNIVERSITY
IN PARTIAL FULFILLMENT OF THE REQUIREMENT
FOR THE DEGREE OF BCA**

FARMHUB – An Agro Welfare System

Has been successfully completed by

1. Rohit Gaonkar
2. Tejaswi Gaonkar
3. Prashanti Gawali
4. Sunisha Parab
5. Aneesa Pathan


15/02/19

Miss SHRADHA NAIK

(Internal Guide)


18/02/19

Mr. SANDESH GAONKAR

(Project Co-Ordinator)


18/02/19

Mr. NEELESH MORAJKAR

(Incharge Principal)

FARMHUB – An Agro Welfare System

DECLARATION BY CANDIDATES

We declare that this project has been prepared by us and to the best of our knowledge, It has not previously formed the basis for the award of diploma or degree by this or any other university.

ROLL NO	NAME	SIGNATURE
6308	Rohit Gaonkar	
6309	Tejaswi Gaonkar	
6314	Prashanti Gawali	
6330	Sunisha Parab	
6331	Ancesa Pathan	

FARMHUB- An Agro Welfare System



Goa Multi - Faculty College

Affiliated to Goa University

CERTIFICATE

This is to certify that a project on

FARMHUB-An Agro Welfare System has been successfully completed by **Mr.Rohit Gaonkar, Miss. Tejaswi Gaonkar, Miss. Prashanti Gawali, Miss. Aneesa Pathan, Miss. Sunisha Parab** studying in T.Y.B.C.A during the academic year 2018-2019. The project has been carried out under the supervision of the internal guide.


15/02/19

Miss. SHRADHA NAIK

(Internal Guide)



(External Examiner)


15/02/19

Mr. SANDESH GAONKAR

(Project Co-Ordinator)


18/02/19

Mr. NEELESH MORAJKAR

(Incharge Principal)

GOA-MULTI FACULTY COLLEGE-DHARBANDORA

2018-2019

ACKNOWLEDGEMENT

We would like to thank all the people who have helped us during the project work and without whose help the project would not have been a success.

We wish to express our sincere gratitude to all those individuals who led a helping hand in all the difficulties that we faced.

First and foremost we would like to thank Miss. Shradha Naik , our project guide who have provided us valuable guidance and assistance. We thank her for all the support, suggestion, guidance and ideas that she shared with us.

Special thanks to our officiating principal Dr. Manasvi Kamat and incharge principal Mr. Neelesh Morajkar whose help was very crucial at all the stages.

We would also like to take the opportunity to thank all our faculty members who have consistently co-operated with us and always supported and encouraged us.

We would like to thank Miss. Shradha Naik and Mr. Sandesh Gaonkar (project co-ordinator) for providing us with support and motivation and all the tools needed in the course of this project.

We also thank our family members and colleagues who have helped us in achieving success for this project.

FARMHUB – An Agro Welfare System

TABLE OF CONTENTS

Sr.No	Particulars	Page no.
1	Introduction to “ FARMHUB”	01
2	Existing System & its Limitations	02
3	Features of proposed system	03
4	Entity Relationship Diagram	04
5	Database schema	06-08
6	Activity diagrams	09-20
7	Use case Diagrams	21
8	Detailed use cases	22-33
9	Backend software tools	34-35
10	Middleware / auxiliary tools	36
11	Frontend software tools	37
12	Validation test report	38-41
13	User manual	42-52
14	Future Enhancements	53
15	Bibliography and References	54

Introduction

Introduction to system

Agriculture sector is the mainstay of the Indian economy, contributing about 15 per cent of national Gross Domestic Product (GDP) and more importantly, about half of India's population is wholly or significantly dependent on agriculture and allied activities for their livelihood. In 2014, the National Crime Records Bureau of India reported 5,650 farmer suicides. The highest number of farmer suicides was recorded in 2004 when 18,241 farmers committed suicide. Development of agriculture will help in up-liftment of the farmers but also benefit the larger section of the rural poor who are directly engaged in agriculture or indirectly linked with agriculture as consumers. Efficient way of production, stabilized prices, higher income from agriculture would create a more conjugative environment in the country for the development of the economy as a whole and of rural population in particular.

Empowerment of the small and marginal farmers through online marketing (our website: FARMHUB) education, reforms and development will ensure a better, efficient and strengthened Indian agriculture. Motivation new models in production and marketing along with creating awareness and imparting education to small farmers will help in development of the sector and more importantly improving the economic status of poor farmers. Videos supplement the personal feel and give viewers an introduction to the new farming technologies.

Agro online Marketing is much more cost-effective, all-inclusive and easy to handle. This enables it to do a great part of the specialized work with just a click of the mouse. This provides huge opportunities for both small and large scale farming to enhance their sales through online marketing in an effective method.

**Existing
System And
It's
Limitation**

Existing System

In the existing system the farmers or consumers has to travel from place to place for the inventory or information about agriculture and its products. All the schemes and information is not readily and easily accessible for the farmers on an up to date basis. In existing system people are not aware of machinery and tools which can be used by Farmers. Some people are not aware of websites which are available. Some farmers have lost their interest in farming because they are not able to get proper benefit.

Limitations:-

- The existing system is not farmer friendly as it consumes lot of time.
- In existing system consumers are not able to know the reviews or ratings of farmers.
- Also farmers are not getting the inventory of planting materials or tools etc...
- Farmers are not getting the deserved profit.
- Because lack of benefits, resources, facilities and awareness in agricultural area farmers have moved away from conventional methods of farming.
- Farmers face lot of wastage of cultivated crops due to lack of essential farming requirements.

Features Of Proposed System

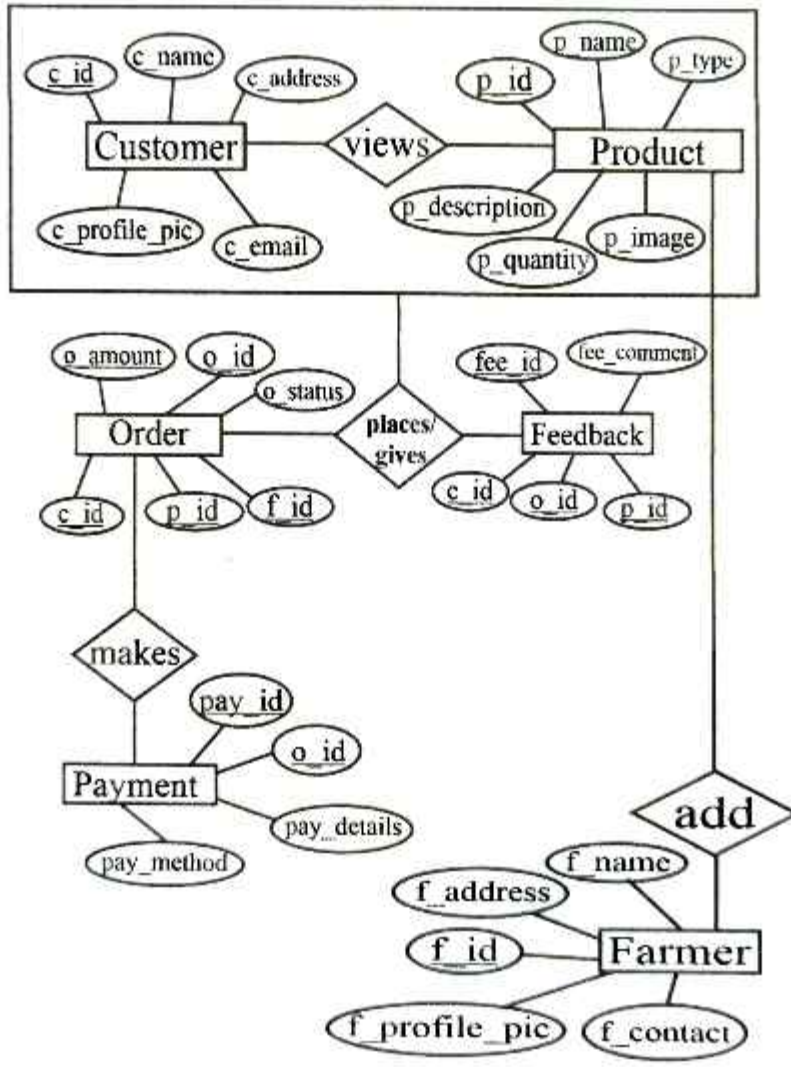
Proposed System

We are designing the system FARMHUB-An Agro Welfare System in such a way that all the possible features will benefit the farmers as well as consumers. We are going to develop the system to overcome the limitations of existing system. Public will be able to view the website. The objective of our system is to promote the farmer and consumer satisfaction.

Features:-

- The system is intended to provide a complete solution for users through a single window using the internet as a sole medium.
- The users will be able to buy the product, view the product, and market the product.
- Also the system will include the farming guide and online courses.
- System will provide the information such as inventory, review and ratings of farmers.
- It will be time saving.
- FARMHUB-an agro welfare system is a user friendly which can be easily accessed by public, farmers and consumers.
- It will be a more helping hand to the farmers as well as consumers which will handle the marketing activity online.
- It provides a platform for the farmers to interact with common users, consumers, suppliers to advertise market and sell their product.
- All the government schemes and related information will be available on website.
- The system will also reduce the travelling which will save the lot of time.
- There will be time saving.

Entity Relationship Diagram



Database Schema

In Entity Relationship Diagram

- Primary key is denoted by:- ()
- Foreign key is denoted by:- (.....)

In Description of Entity Relationship diagram

- ❖ Primary key s denoted by:- (*)
- ❖ Foreign key is denoted by:- (#)

CUSTOMER

Symbols	Attributes	Type	Description
*	c_id	Int	This will store customer ID
	c_name	Varchar	This will store customer name
	c_address	Varchar	This will store customer address
	c_profile_pic	Varchar	This will store customer profile picture
	c_email	Varchar	This will store customer email ID

PRODUCT

Symbols	Attributes	Type	Description
*	p_id	Int	This will store product ID
	p_name	Varchar	This will store product name
	p_type	Varchar	This will store product type
	p_image	Varchar	This will store product image
	P_quality	varchar	This will store the quality of product
	p_description	Varchar	This will store product description

FEEDBACK

Symbols	Attributes	Type	Description
*	fee_id	Int	This will store feedback ID
#	o_id	Int	This will store order ID in other tables. And acts as a foreign key.
#	c_id	Int	This will store customer ID in other tables. And acts as a foreign key.
#	p_id	Int	This will store product ID in other tables. And act as a foreign key.
	fee_comments	Varchar	This will store the comments of the customer

ORDER

Symbols	Attributes	Type	Description
*	o_id	Int	This will store order ID
#	f_id	Int	This will store farmer ID in other tables. And acts as a foreign key.
#	c_id	Int	This will store customer ID in other tables. And acts as a foreign key.
#	p_id	Int	This will store product ID in other tables. And act as a foreign key.
	o_status	Varchar	This will store the order status
	o_amount	int	This will store the total cost of the product

FARMER

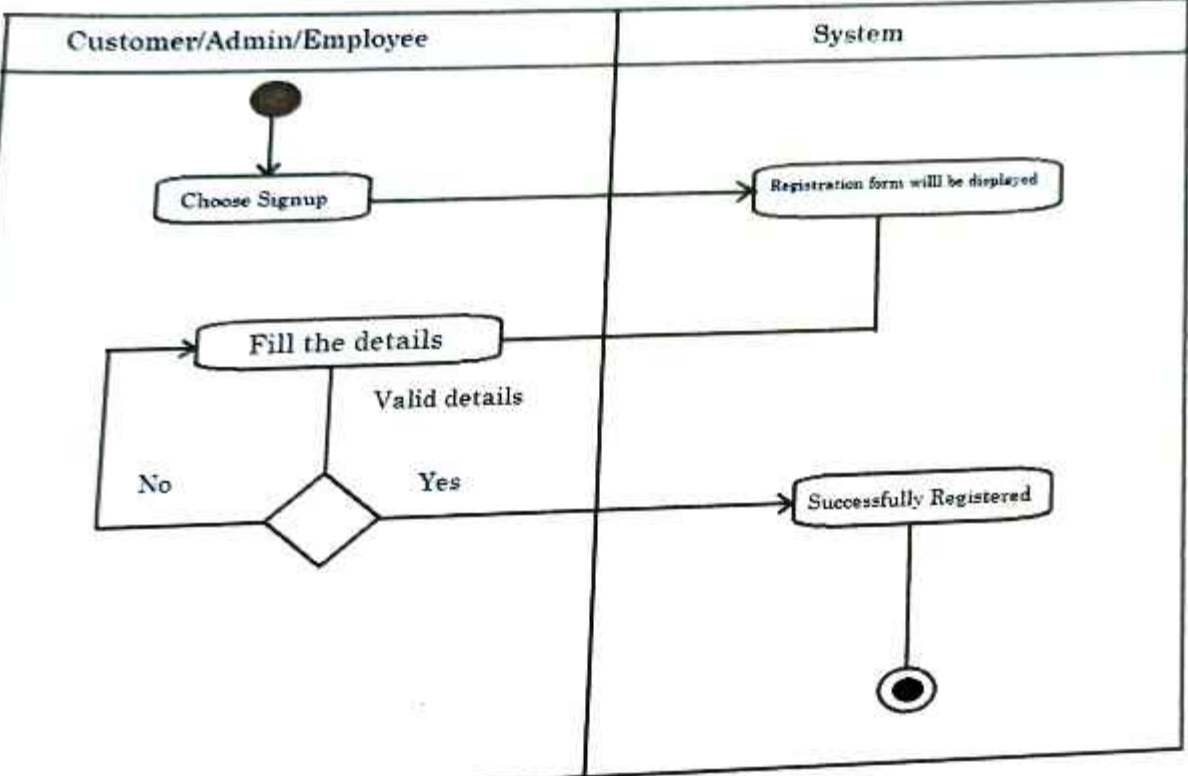
Symbols	Attributes	Type	Description
*	f_id	Int	This will store farmer ID
	f_name	Varchar	This will store farmer name
	f_contact	Int	This will store farmer's contact
	f_address	Varchar	This will store farmer's address.
	f_profile_pic	Varchar	This will store the farmer's profile picture

PAYMENT

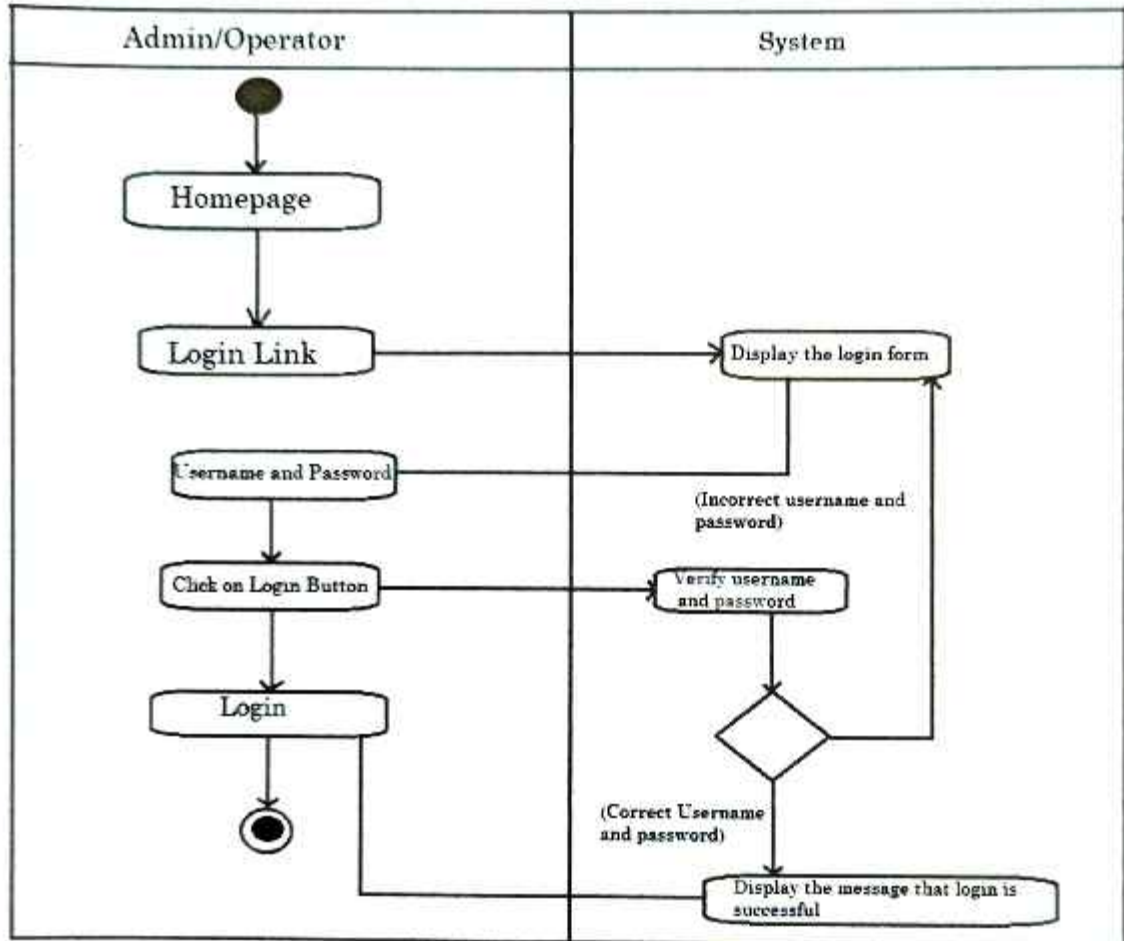
Symbols	Attributes	Type	Description
*	pay_id	Int	This will store payment ID
#	o_id	Int	This will store order ID
	pay_method	varchar	This will store payment method
	pay_details	varchar	This will store payment details

Activity Diagram

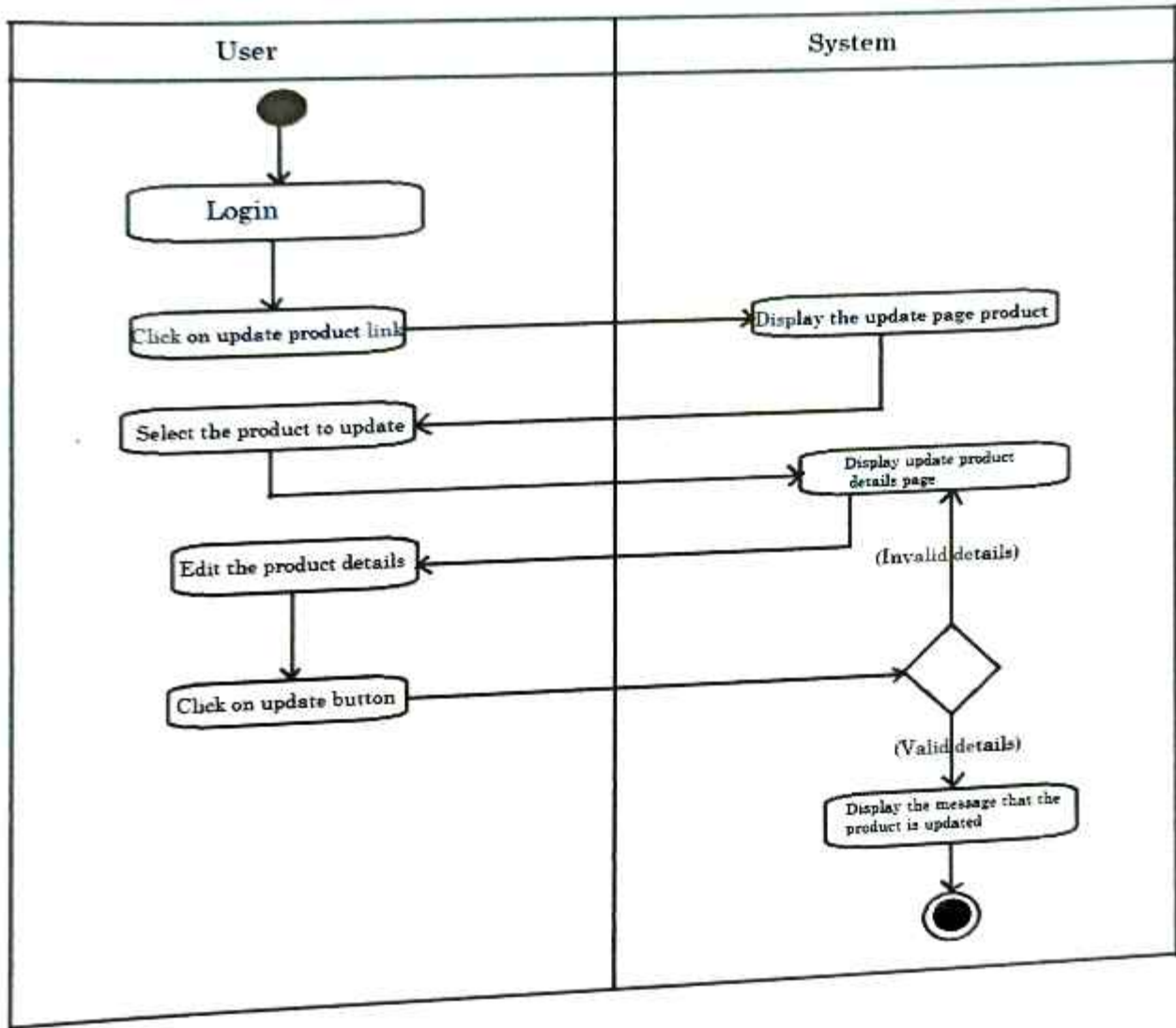
Registration



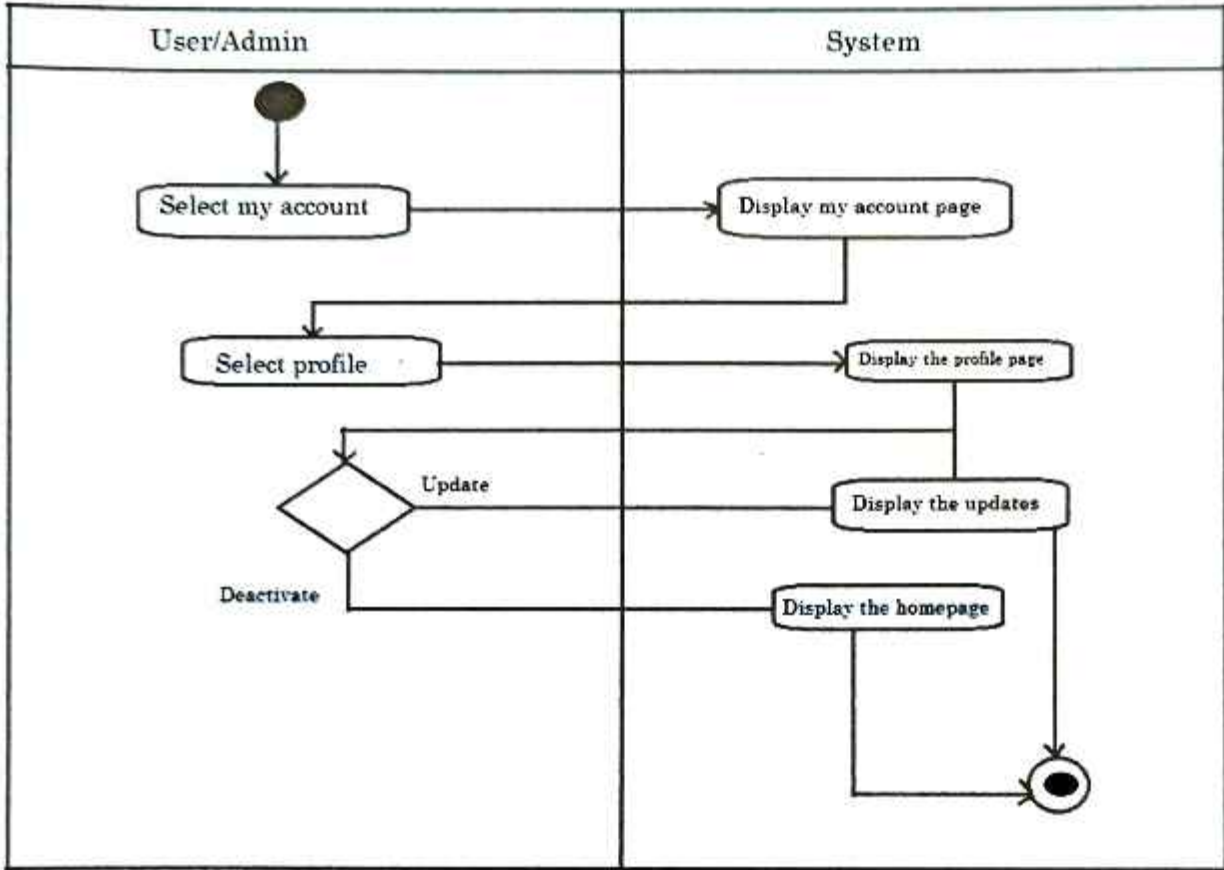
Login



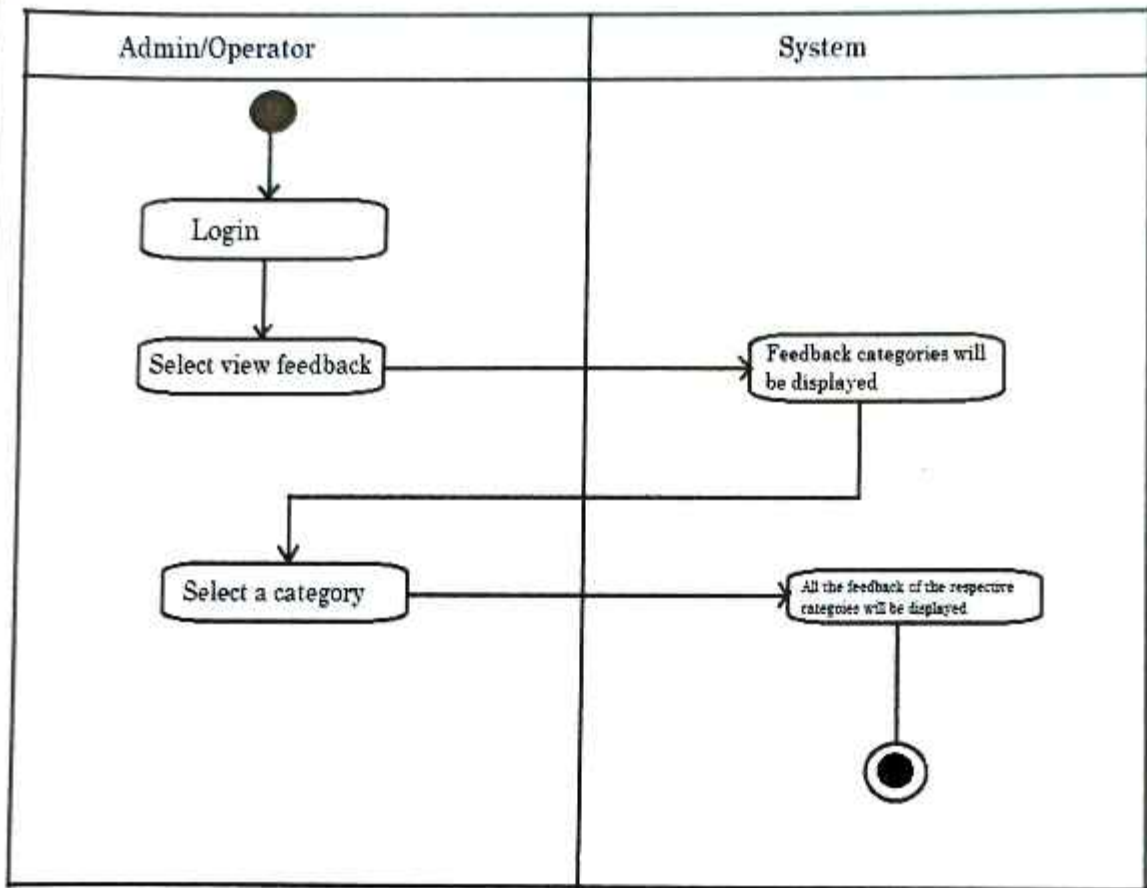
Update Product



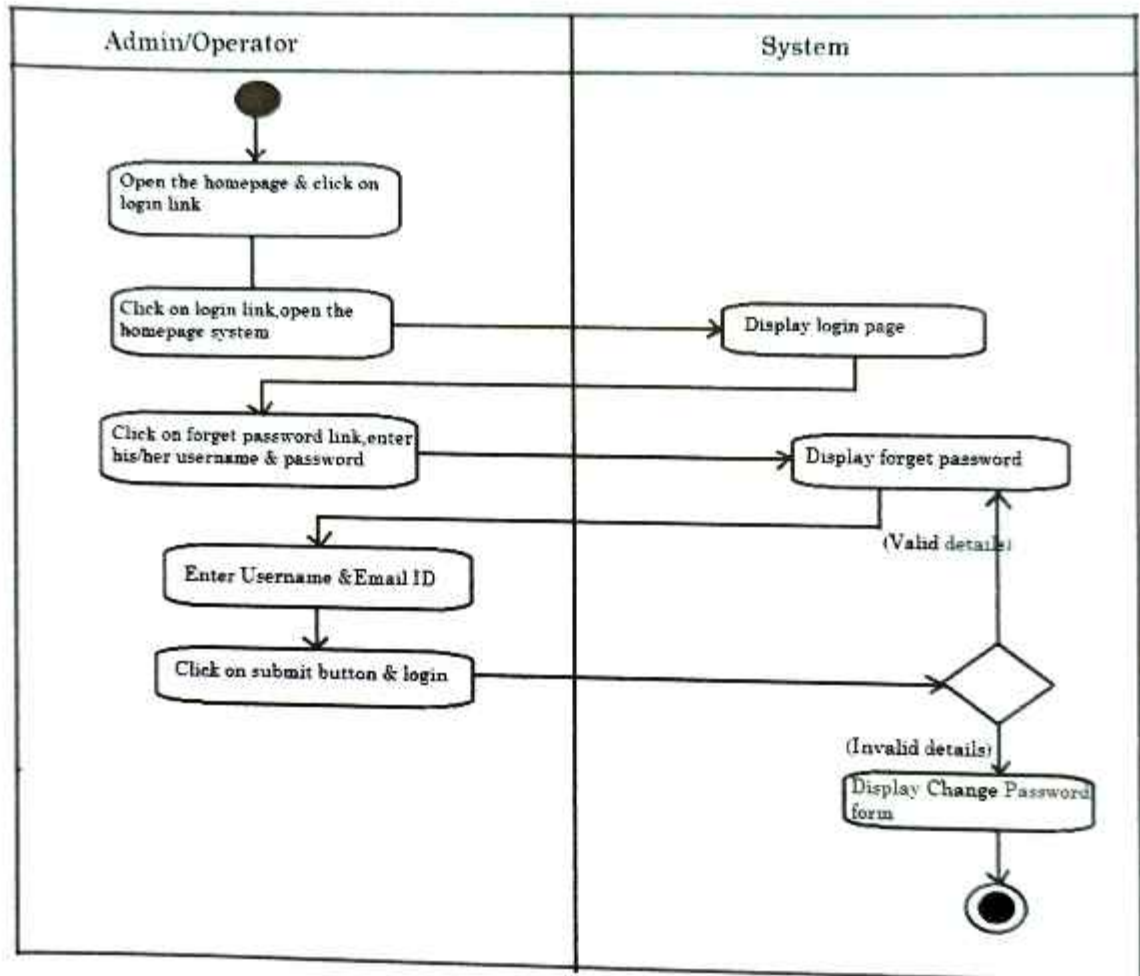
Manage profile



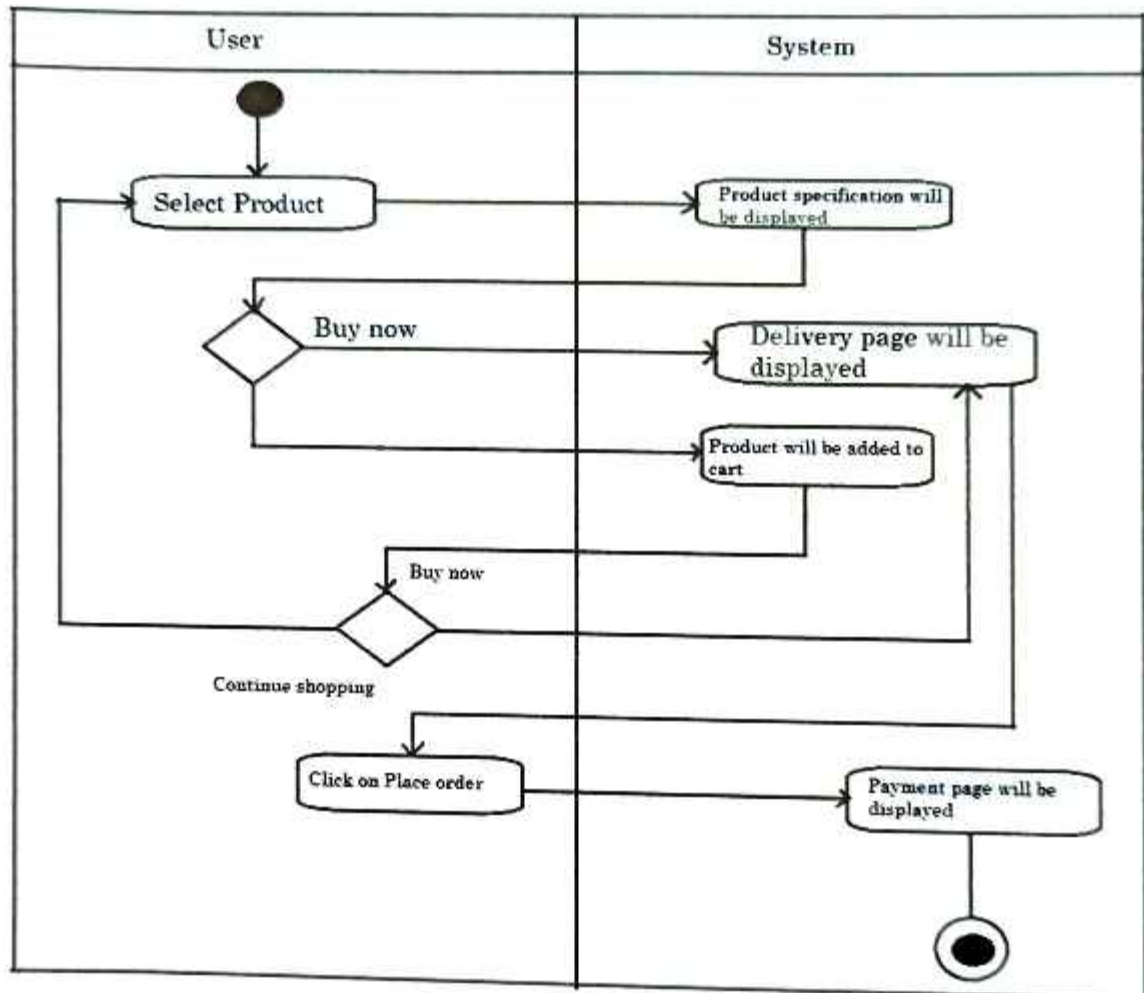
Feedback



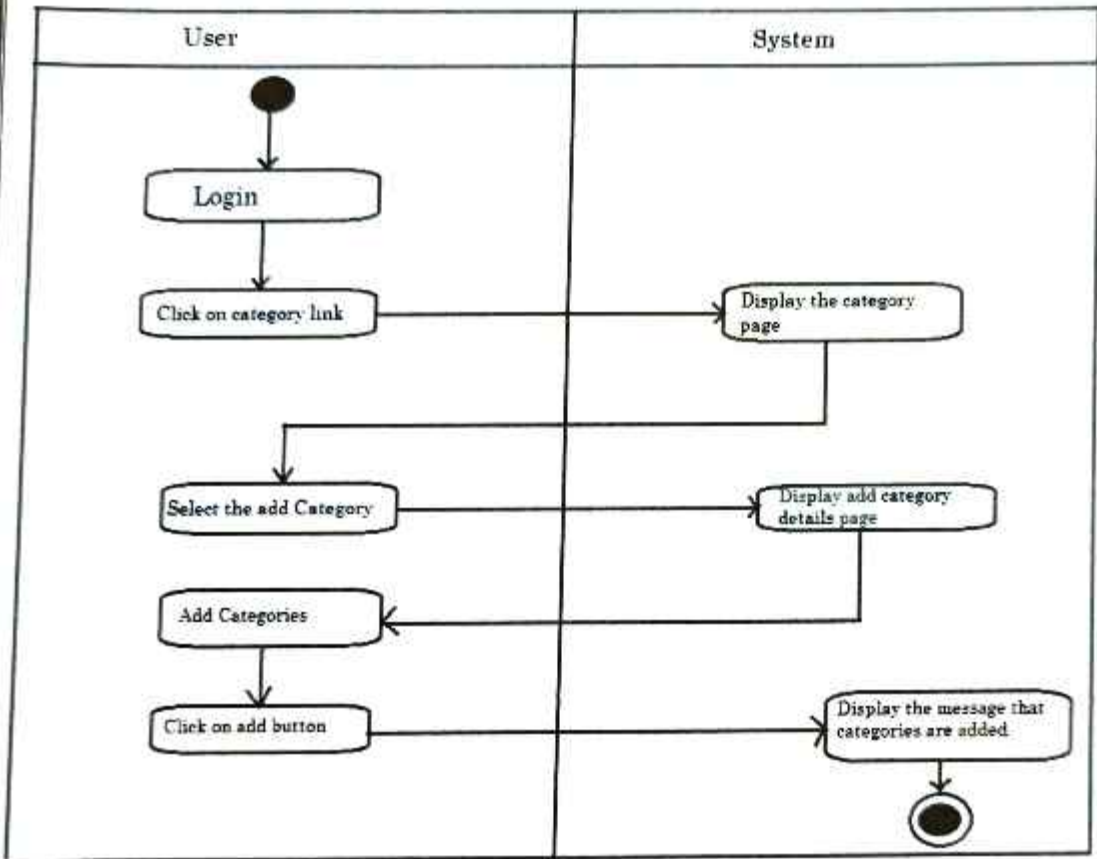
Forgot Password



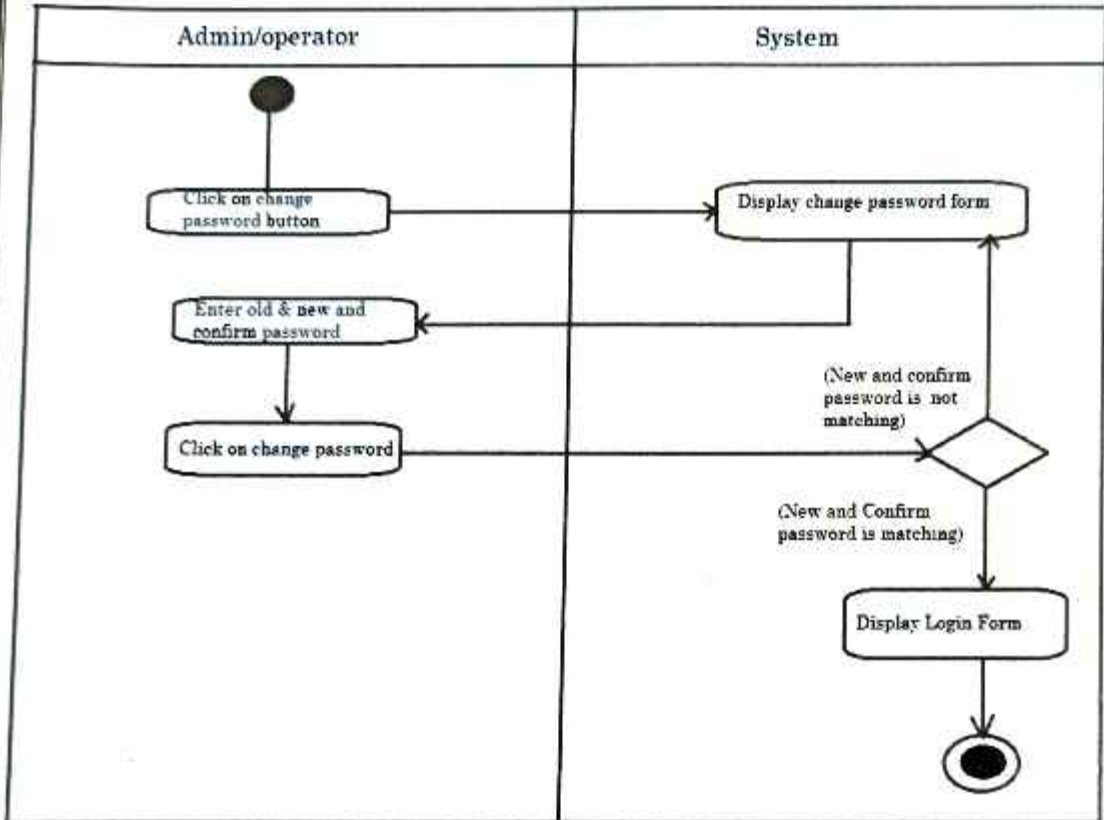
Place Order



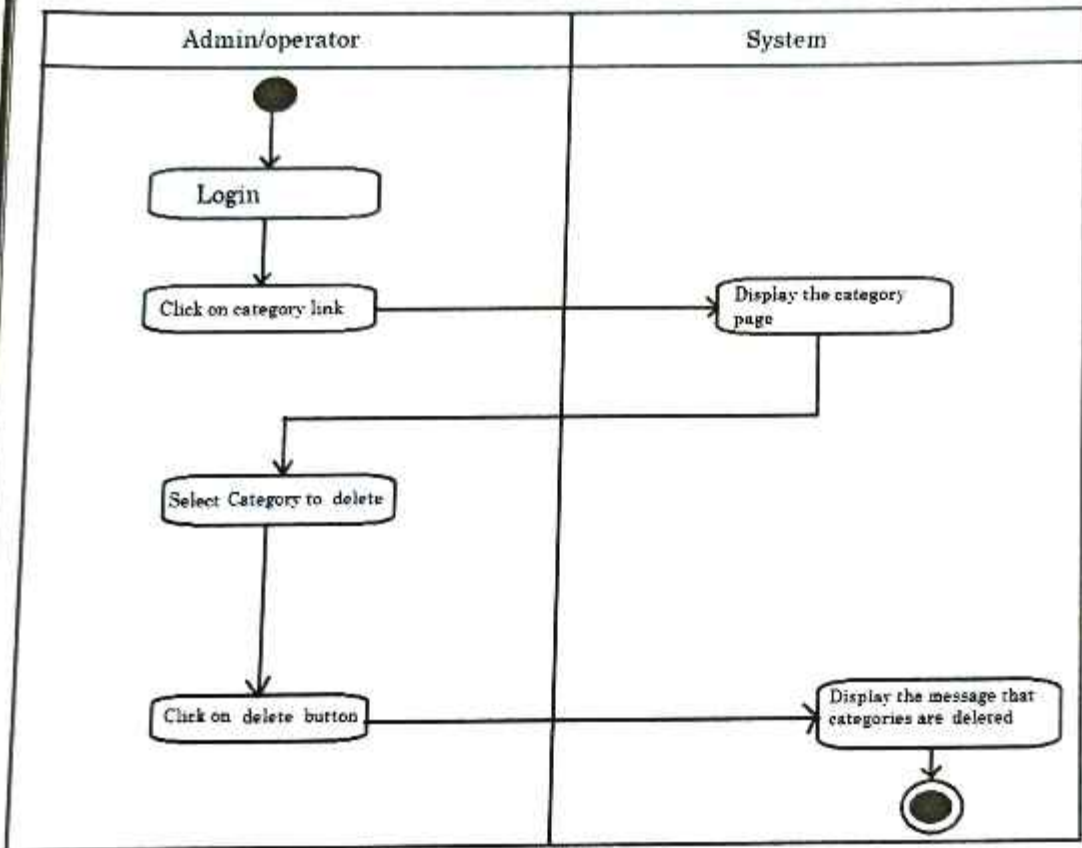
Add Category



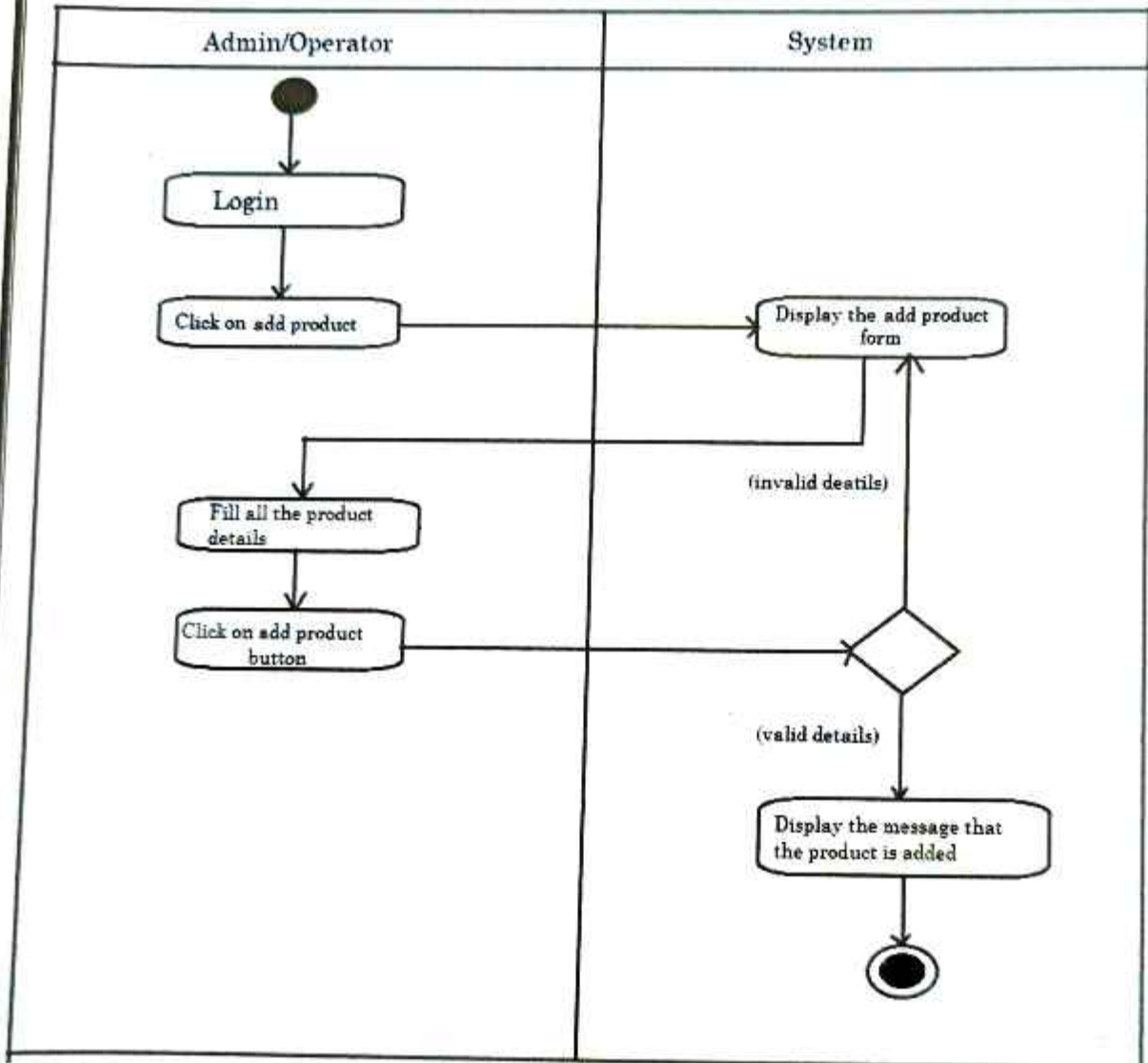
Update category



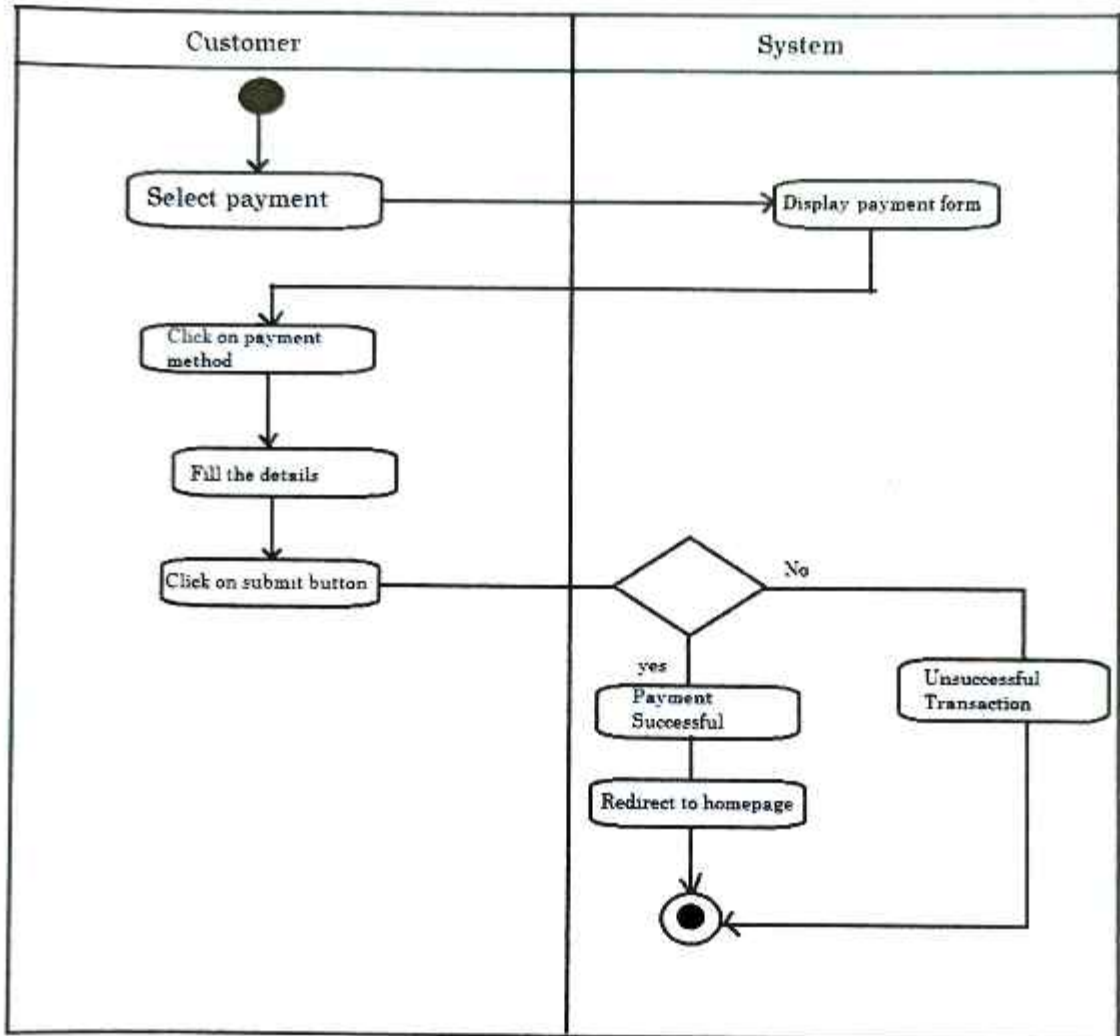
Delete category



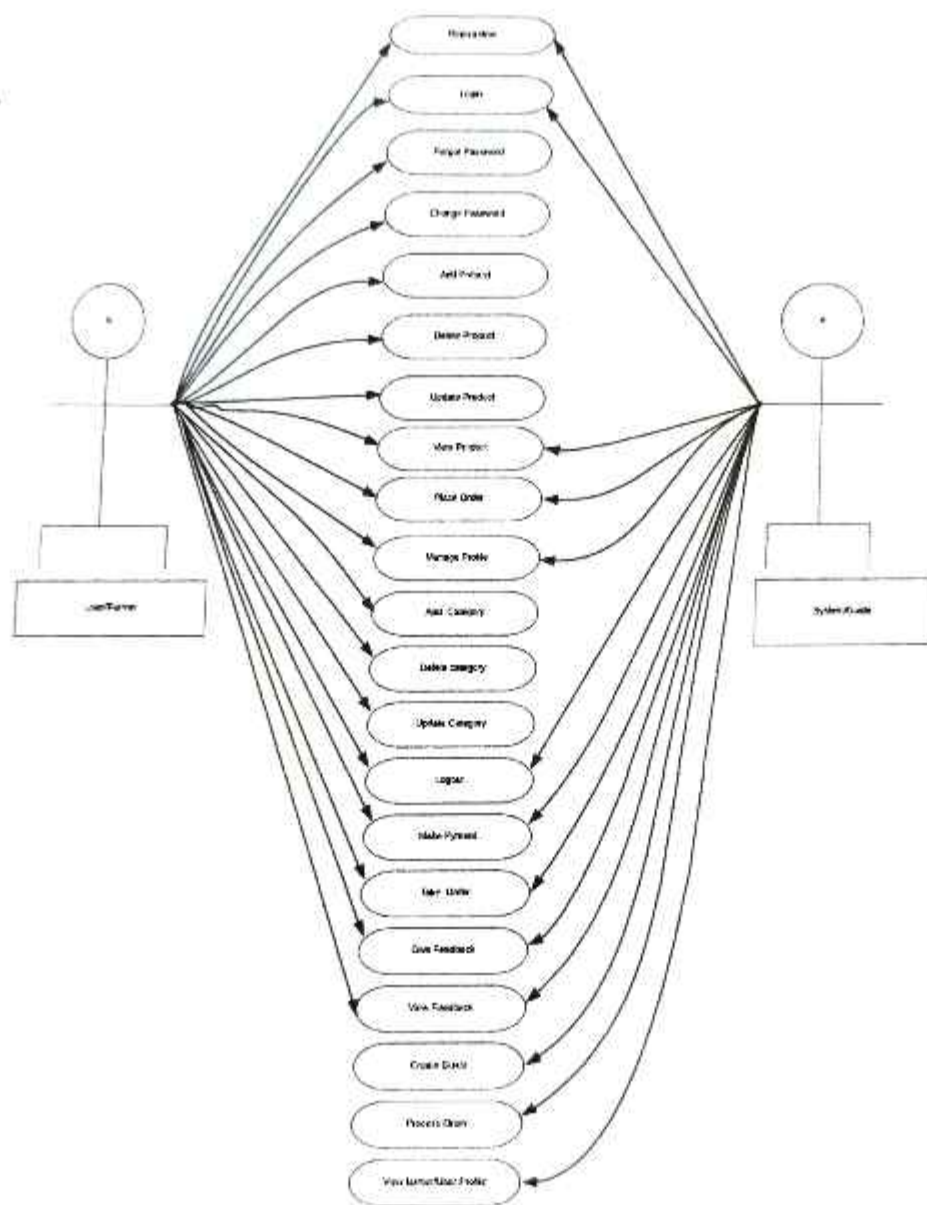
Add product



Payment



Use Case Diagram



Detailed Usecase

USECASE TO REGISTRATION

Use case name :- Registration

Scope :- FARMHUB – An Agro Welfare System

Level :- User goal

Primary Actor :- Farmer/user/customer

Stakeholder & interest :- Farmer/user/customer wants to register to login successfully.

Pre-condition :- Farmer/user/customer should have to fill correct personal details.

Post-condition :- Farmer/user/customer should added correct personnel details successfully.

Main Screen Scenario (MSS) :-

1. Farmer/user/customer should register and then click on login button.
2. Systems display the login form.
3. Farmer/user/customer should fill all the details and click on login button.
4. System displays the message that the Farmer/user/customer logged in successfully.

Extension:-

1. Blank fields.

2) USECASE TO LOGIN

Use case name :- Login

Scope :- FARMHUB – An Agro Welfare System

Level :- User goal

Primary Actor :- Administrator/Farmer/user/customer

Stakeholder & interest :-Administrator /Farmer/user/customer want to login successfully.

Pre-condition :- Administrator/Farmer/user/customer should have valid Username and Password.

Post-condition :- Administrator/Farmer/user/customer should added correct personnel details successfully.

Main Screen Scenario (MSS) :-

1. Farmer/user/customer should click on login button.
2. Systems display the login page or form.
3. Administrator/Farmer/user/customer should fill all the details (username and password).
4. Click on login button.
5. Verification of username and password.
6. System displays the message that the Farmer/user/customer logged in successfully.

Extension:-

1. Handle empty fields.
2. Handles invalid login.

3) USECASE TO DELETE PRODUCT/CATEGORY

Use case name :- Delete product/category

Scope :- FARMHUB – An Agro Welfare System

Level :- User goal

Primary Actor :- Administrator/Farmer

Stakeholder & interest :- Administrator/Farmer deletes an existing product/category.

Pre-condition :- The product/category should exist.

Post-condition :- The product/category is deleted.

Main Screen Scenario (MSS) :-

1. Administrator/Farmer login and then click on Delete product/category button.
2. System displays the Delete product/category page.
3. Administrator/Farmer selects a product/category to be deleted.
4. Click on delete button.
5. System displays the message that the product/category is deleted successfully.

Extension:-

1. The product or category does not exist.

4) USECASE TO MAKE PAYMENT

Use Case Name	:- make payment
Scope	:- FARMHUB – An Agro Welfare System
Level	:- user goal
Primary Actor	:- User
Stakeholder & interest	:- user wants to make payment successfully
Pre-condition	:- User should have payment details
Post-condition	:- User makes payment successfully

Main Screen scenario(MSS):-

1. User logs in and clicks on make payment link.
2. System displays the payment page.
3. Display payment method.
4. Fill the details and click on submit button.
5. User pays money.

Extension:-

- Payments are made.

5) USECASE TO PLACE ORDER

Use Case Name	:- To make order
Scope	:- FARMHUB – An Agro Welfare System
Level	:- user goal
Primary Actor	:- Farmer
Stakeholder & interest	:- user place order
Pre-condition	:- The order should be exist
Post-condition	:- The order are placed

Main Screen scenario(MSS):-

1. User log in and select a product to place order.
2. Product specification will be displayed.
3. User places the order or will add the product to the cart.
4. System display order page.
5. Place order will display the payment page then order will be placed successfully.

Extension:

1. The orders are placed.

6) USECASE FOR VIEW FEEDBACK

Use Case Name	:- Feedback verification
Scope	:- FARMHUB – An Agro Welfare System
Level	:- user goal
Primary Actor	:-Administrator/ farmer
Stakeholder & interest	:-Administrator/farmer wants to view feedback
Pre-condition	:- all the fields must be filled
Post-condition	:- Feedback are viewed successfully

Main Screen scenario(MSS):-

1. Administrator/farmers logs in.
2. Administrator / farmer click on view feedback.
3. Administrator/farmer selects a particular feedback.
4. System views the feedback.

Extension:-

- Verifies the feedback.

7) USECASE TO UPDATE PRODUCT/CATEGORY

Use Case Name	:- Update product/category
Scope	:- FARMHUB – An Agro Welfare System Level
:- user goal	
Primary Actor	:-Administrator
Stakeholder & interest	:-Administrator updates an existing Product/category
Pre-condition	:- The product/category should exist
Post-condition	:- The product/category is updated

Main Screen scenario(MSS):-

1. Administrator logs in and then clicks on update product/category button.
2. System displays the update product/category page.
3. Administrator select the product/category to update and then clicks on fetch details button.
4. System display product/category details.
5. Administrator edits the product/category details and then clicks on update button.
6. System displays the message that the product/category is updated successfully.

Extension:-

- The product/category does not exist.

8) USECASE TO ADD/VIEW PRODUCT/CATEGORY

Use Case Name	:- Add/view product/category
Scope	:- FARMHUB – An Agro Welfare System
Level	:- user goal
Primary Actor	:- Administrator/farmer
Stakeholder & interest	:- Administrator/farmer/user wants to add Product /category successfully
Pre-condition	:- Administrator/farmer/user browses system to view Product/category details
Post-condition	:- Administrator/farmer/user added new Product/category successfully

Main Screen scenario(MSS):-

1. Administrator logs in and clicks on add product/category button.
2. System display the add product/category form.
3. Administrator fills all the product/category details and then clicks on add product/category button.
4. System displays the message that the product/category is added successfully.

Extension:-

- Blank field.

9) USECASE FOR CHANGE PASSWORD

Use Case Name	:- Change password
Scope	:- FARMHUB – An Agro Welfare System
Level	:- user goal
Primary Actor	:- Administrator /farmer/user
Stakeholder & interest	:- Administrator /farmer/user wants to changes password
Pre-condition	:- Administrator /farmer/user should registered
Post-condition	:- Administrator /farmer/user changes password

Main Screen scenario(MSS):-

1. System displays change password form.
2. Administrator/farmer/user confirms old password and enters the new password.
3. System verifies the user details.
4. Administrator/farmer/user clicks on submit button.
5. System displays the login page.

Extension:-

- Administrators/farmer/user not registered.
- Blank fields.

10) USECASE FOR FORGOT PASSWORD

Use Case Name	:- Change password
Scope	:- FARMHUB – An Agro Welfare System
Level	:- user goal
Primary Actor	:- Administrator /farmer/user
Stakeholder & interest	:- Administrator /farmer/user forgot the password while Logging in account.
Pre-condition	:- Administrator /farmer/user should be registered
Post-condition	:- Administrator /farmer/user changes the password

Main Screen scenario(MSS):-

1. Administrator/farmer/user click on log in button.
2. System displays login form.
3. Administrator/farmer/user click on forgot password.
4. System displays forgot password form.
5. Administrator/farmer/user enters user new username and password.
6. Display forgot password.
7. Enter username and email id.
8. System verifies the user details.
9. Administrator/farmer/user clicks on submit button.
10. System displays the login page.

Extension:-

- Administrators/farmer/user not registered.
- Blank fields.

11) USECASE FOR MANAGE PROFILE

Use Case Name	:- Change password
Scope	:- FARMHUB – An Agro Welfare System
Level	:- user goal
Primary Actor	:- Administrator /farmer/user
Stakeholder & interest	:- Administrator /farmer/user wants to manage Profile.
Pre-condition	:- Administrator /farmer/user should have profile detail.
Post-condition	:- Administrator /farmer/user manage the profile Successfully.

Main Screen scenario(MSS):-

1. Administrator/farmer/user login and clicks on manage profile link.
2. Administrator/farmer/user should select the account and displays the manage profile.
3. Administrator/farmer/user manages the profile.

Extension:-

- Administrators/farmer/user should be registered.
- Profits are managed

12) USECASE FOR LOGOUT

Use case name :- Logout

Scope :- FARMHUB – An Agro Welfare System

Level :- User goal

Primary Actor :- Administrator/Farmer/user/customer

Stakeholder & interest :- Administrator/Farmer/user/customer wants to logout successfully.

Pre-condition :- Administrator/Farmer/user/customer must have logged out in the system.

Post-condition :- Administrator/Farmer/user/customer logs out successfully.

Main Screen Scenario (MSS) :-

1. Administrator/Farmer/user/customer click on log out button.
2. User comes out from the website.

Extension:-

1. User comes out from the website.

Backend Software Tools

MYSQL

- ❖ *MYSQL* is an open source relational database management systems.
- ❖ *MYSQL* is owned by Oracle Company and is a popular choice of databases for used in web applications and is a central components of the widely used lamp open source web application software stack.
- ❖ *MYSQL* is used in many high profiles large scale websites, including Google, Facebook, Twitter and You Tube.



NOTEPAD++

- ❖ *Notepad++* is a text editor and source code editor for windows.
- ❖ It can also run on Linux and mac OS using software such as wine.
- ❖ It is distributed as free software.
- ❖ *Notepad++* as a tabbed source code editor and notepad replacement with a customizable interface is one of the few r code editor that "folding" allowing users to quickly reduce and expand sections of code to see the overall document.



PHP

- ❖ PHP stands for “Hypertext Preprocessor”.
- ❖ It is widely used as open source general-purpose scripting language that is especially used for web designing.
- ❖ PHP was developed to specifically address needed of web to provide dynamic content.
- ❖ Using PHP, you can restrict users to access some pages of your website. It can encrypt data.



XAMPP

- ❖ The “X” in XAMPP stands for “operating system.” The rest of the acronym is: Apache, MySQL, PHP, and PERL.
- ❖ It also provided is PhpMyadmin which gives a GUI tool for managing your MySQL databases.
- ❖ It makes transitioning from a local test server to a live server possible.



**Middleware/
Auxiliary
Tools**

ADOBE PHOTOSHOP

Adobe Photoshop is a [raster graphics editor](#) developed and published by [Adobe Systems](#) for [macOS](#) and [Windows](#). Photoshop was created in 1988 by [Thomas](#) and [John Knoll](#). Since then, it has become the *de facto* industry standard in [raster graphics](#) editing, such that the word "Photoshop" has become a verb as in "to Photoshop an image," "photo shopping" and "Photoshop", though Adobe discourages such use. It can edit and compose [raster images](#) in multiple layers and supports [masks](#), [alpha compositing](#) and several [color models](#) including [RGB](#), [CMYK](#), [Lab color space](#), [spot color](#) and [duotone](#).



Frontend Software Tools

CSS

- ❖ CSS stands for cascading style sheets.
- ❖ Style defines how to display HTML elements.
- ❖ Styles were added to HTML 4.0 to solve a problem.
- ❖ External style sheets can save a lot of work.
- ❖ External style sheets are stored in CSS file.



HTML

- ❖ HTML stands for Hyper Text Mark-up Language.
- ❖ HTML is a language which describes the web pages.
- ❖ It is not a programming language; it is a mark-up language.
- ❖ A mark-up language is a set of mark-up tags.



Validation Test Report

Checking Test cases for Login Module:-

1) Test Case 1: Check results on entering valid User name & Password

Name of the Test Case	Input	Expected Output	Result
Entering valid User Name & Password	User Name and Password	Login should be Successfully	Successfully Login

1) Test Case 2: Check results on entering Invalid User name & Password

Name of the Test Case	Input	Expected Output	Result
Invalid User Name & Password	User Name and Password	Invalid username and password	Login Unsuccessful.

2) Test Case 3: Check response when a User name is Empty & Login Button is pressed.

Name of the Test Case	Input	Expected Output	Result
User Name is empty.	User Name is blank	User name is does not match	Login Unsuccessful.

3) Test Case 4: Check response when a Password is Empty & Login Button is pressed.

Name of the Test Case	Input	Expected Output	Result
Password is empty.	Password is blank	Password does not match	Login Unsuccessful.

Checking Test cases for Registration Module:-

1) Test Case 1: Check results on entering valid information about user

Name of the Test Case	Input	Expected Output	Result
Entering valid/correct information about user	Valid/correct Information	Sign up should be Successfully	Successfully sign Up

2) Test Case 2: Check results on entering valid user email id & Password

Name of the Test Case	Input	Expected Output	Result
Entering valid User email id and password	User email id and Password	Sign up should be Successfully	Successfully Sign up

3) Test Case 3: Check results on entering invalid User email id & Password

Name of the Test Case	Input	Expected Output	Result
Entering invalid User email id & Password	User email id and Password	Email id and password does not match	Unsuccessful in Signup

4) Test Case 4: Check results on entering valid User name & invalid Password

Name of the Test Case	Input	Expected Output	Result
Entering valid User Name & invalid Password	User Name and Password	Password is incorrect	Sign up unsuccessful.

5) Test Case 5: Check results on entering repeat password

Name of the Test Case	Input	Expected Output	Result
Entering repeat password	Password	Password is incorrect	Sign up unsuccessful.

6) Test Case 4: Check response when a user type is Empty & Sign up Button is pressed.

Name of the Test Case	Input	Expected Output	Result
User Type is empty	User type	User type is empty	Sign up unsuccessful.

Checking Test cases for Feedback Module:-

- 1) Test Case 1: Check response when a user name is Empty & Submit Button is pressed.

Name of the Test Case	Input	Expected Output	Result
Entering invalid username	User name	User name is invalid	Feedback submission is unsuccessful.

- 2) Test Case 2: Check response when a comment box is Empty & Submit Button is pressed.

Name of the Test Case	Input	Expected Output	Result
Empty text box/comment box	Text in comment box	Empty comment box	Feedback submission is unsuccessful.

- 3) Check response when overall review is Empty & Submit Button is pressed.

Name of the Test Case	Input	Expected Output	Result
Overall review is empty	Select overall review from given option	Select one from given option	Feedback submission is unsuccessful.

User Manual

HOME PAGE



HOME:-

When you click on home page, user will be able to see the home page where user can get brief idea about the website. Highlighting the available local varieties of products.

FARMER'S GALLERY:-

When a user click on farmer's gallery the user will be able to see the farmer's profile containing details about farmer.

PRODUCT'S GALLERY:-

It will contain different types of products like fruits, flowers, vegetables, honey and other products.

AGRO GUIDE:-

When you click on agro guide, it will provide information about agriculture.

LOGIN:-

When you click on login button new user will directly go on registration form if the user is having accounted then it will direct on the user account.

ABOUT US:-

It will provide information about the website.

Registration form

Sign Up

Please fill in this form to create an account

NAME

name

PROFILE PHOTO



ADDRESS

address

USER TYPE

User

EMAIL

Enter Email

PASSWORD

Enter Password

REPEAT PASSWORD

Repeat Password



REMEMBER ME

By creating an account you agree to our [Terms & Privacy](#)

Cancel

Create account

Clear Data

NAME:-

The new customer has to enter his/her first name, middle name and surname properly.

PROFILE PHOTO:-

The new customer has to put his/her profile photo.

ADDRESS:-

The new customer has to enter his / her proper address.

USER TYPE:-

The customer has to put the user type.

E-MAIL:-

The customer has to enter his/her correct email Id.

PASSWORD:-

The Customer has to enter proper Password which will help to protect the account.

REPEAT PASSWORD:-

The user has to enter the same password as it was typed in the above block.

REMEMBER ME:-

The customer is giving permission to remember his/her profile.

CREATE ACCOUNT:-

The customer is creating accounts on the website.

CANCEL:-

The customer tries to cancel the registration form.

LOGIN FORM



The image shows a login form for 'FARM TUB'. At the top center is an oval logo with a green and yellow background, featuring a stylized 'F' and the text 'FARM TUB'. Below the logo, the form has a blue background. It includes a 'Username:' label followed by a white input field with the placeholder text 'Enter email'. Below that is a 'Password:' label followed by a white input field with the placeholder text 'Enter Password'. At the bottom of the form, there is a blue 'Login' button, a checkbox labeled 'Remember me', a red 'Forgot Password' button, and a white 'Create New Account' button. The background of the form is divided into horizontal bands of blue, purple, black, and red.

USERNAME:-

The user has to enter the name which she/he had used while registering the account details.

PASSWORD:-

The user has to enter the password which he/she had used while registering the account details.

LOGIN:-

Let the user to access the account if the username and password is correct.

REMEMBER ME:-

If the user uses this option then user will not have to enter the detail again and again.

FORGOT PASSWORD:-

This option allows the user to change the password if she/he has forgotten the password.

CERATE NEW ACCOUNT:-

If customer is not able to remember the password then he/she can create new account. Or if the customer is new then he/she can create new account

Product Gallery



FRUITS:-

The website will contain different types of fruits which are grown in Goa. It will contain picture as well as content toward a particular fruit.

VEGETABLES:-

The website will contain different types of Vegetables which are grown in Goa. It will contain picture as well as content towards a particular vegetable.

FLOWERS:-

The website will contain different types of flowers which are grown in Goa. It will contain picture as well as content towards a particular flower.

HONEY:-

The website will contain different types of honey which are grown in Goa. It will contain picture as well as content toward a particular honey.

SPICES:-

The website will contain different types of spices which are grown in Goa. It will contain picture as well as content toward particular spices.

OTHER PRODUCTS:-

The website will contain different types of other products which are grown in Goa. It will contain picture as well as content toward particular product.

Order form

ORDER

Full Name

Email

Address

City

Quantity Needed:

Zip

State

Shipping address same as billing
 COD cash on delivery
[online payment](#)

Order Confirm

Full Name:-

User should insert correct name, which in return will help the delivery person to deliver the products at correct place.

Email:-

User should enter correct email-id, which in return will help the user to get notification regarding the products.

Address:-

User should enter correct address so that the delivery should take place at correct address and to the correct person.

City:-

User should include correct city name ,which will help the delivery person to deliver product at correct place.

Quantity Needed:-

User should specify correct quantity of product which are been needed. The quantity should not be less and also it should be in more quantity.

Zip:-

Because of Zip the delivery person will able to reach at the correct destination.

State:-

It will help the product to reach at correct state.

Shipping address same as billing:-

User address should be the same as it will be for billing , which will help in easy delivering of products.

COD Cash On Delivery:-

It is an mode of payment where in customer will allowed to pay when product will reach at their hand.

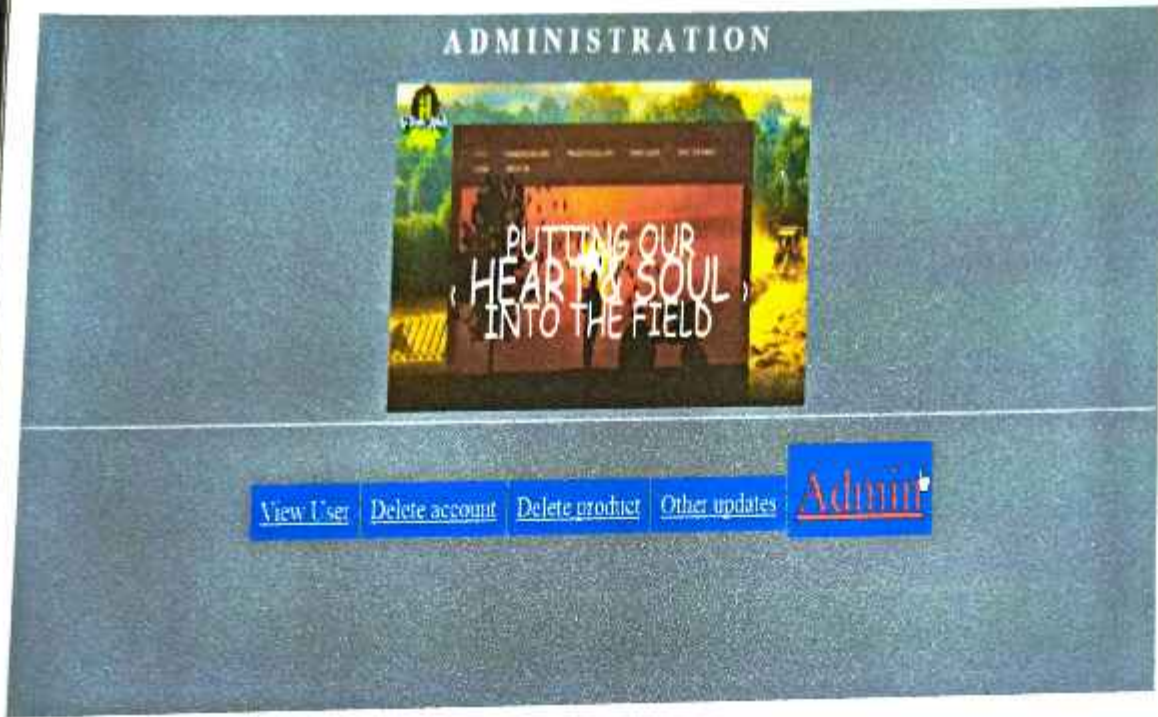
Online Payment:-

It will help the user to pay online

Order Confirm:-

Order will be confirmed

Administration Form



VIEW USER:-

It will allow the admin to view all the user account.

DELETE ACCOUNT:-

It will allow the admin to delete the account of a particular user.

DELETE PRODUCT:-

It will allow the admin to delete the product which will not be in stock.

OTHER UPDATES:-

It will allow the admin to update the other entire product into the website.

ADMIN:-

He/she is the one who will control whole system/website.

Farming Expert

Available products:



Tomatoes

Tomatoes are commonly used in most of the dishes.



Brinjal

Brinjal is used to prepare many recipes.



Cabbage

Cabbage is a vegetable used in various recipes.



Potatoes

Potato is used in various recipes.

[Read more](#)

Welcome!

Introduction to website

The Agricultural Marketing is a matter of great importance to farmers, consumers, and business and society. It provides the channel of communication between

farmers and the public. It also gives continuous information about the demands of the agricultural produce. Agricultural marketing in general includes all activities from farm to the kitchen of the consumer.

[Read more](#)

what will you learn?

HOW DO KULAGAR BENIFFT THE ECOSYSTEM & WORKS!

« what do we get from kulagars other than food? »

DR. Sachin Tendulkar (IARI)



Updates of programs:

- > History, Job, Recycling
- > Mushroom training
- > ICAR workshops
- > GDA, Govt Seminars

In our website we provide agricultural experts so that they can guide the new farmers.

They will provide the information regarding a farmer's problem.

They will also teach a new farmer how to start farming and what is the basic need which a farmer has to know.

Feedback

Your feedback is valuable:

User Name:

Comment:

Overall Review for FarmHub:

- GOOD
- AVERAGE
- NEED IMPROVEMENT

In our feedback form the customer has to give feedback on the purchased product. It will help other customer to know how the products are on the website.

It contain username where user have to enter the his/her name.

In comment box user has to type a comment on the purchased product.

User has to give overall review for the website so others can know our website is easy to use/friendly or not.

Then user has to submit the feedback form when they fill all the details on the form.

Future Enhancement

Future Enhancement

In future we would like to make some changes to our project to improve its functionality and provide better services to the user.

Some of them are stated below:-

- Add online courses.
- Rating
- Tax Management module.(GST)
- Alerts / Reminders regarding stocks.
- Return policy for long self-life product.
- Extend beyond Goa.

**Bibliography
And
References**

Bibliography & References

- <http://www.W3schools.com/>

W3Schools is a popular web site for learning web technologies online. Content includes tutorials and reference relating to HTML, CSS, JavaScript, PHP, Angular JS, SQL, Bootstrap and JQuery.

- <http://www.tutorialspoint.com/>

The biggest online tutorials library having a collection of the most acclaimed tutorials on various technical and non-technical subjects.

- <http://www.agri.goa.gov.in>

The main objective of the website is to provide information and enable farmer to apply for various services offered by the Department of Agriculture.

- <http://www.jqueryscript.net/>

Head first PHP and MYSQL

Authors: Lynn Beighley

Micheal Morrison

